

MAYVILLE
AREA AMBULANCE



2018 OPERATIONAL REPORT



Serving the Community since 1976

5802 Lynch Drive
P.O. Box 181
Mayville, Michigan 48744

Business: (989) 843-6136

Emergency: 911

admin@mayvilleambulance.org

www.mayvilleambulance.org

OUR SERVICE



Mayville Area Ambulance Service (MAAS) is a 501(c)3 Non-Profit Corporation, registered in the State of Michigan, to provide ambulance and emergency medical services to the residents of Mayville and the surrounding areas. We provided both emergency and non-emergency services and transportation.

MAAS is licensed by the State of Michigan Department of Community Health as a Life Support Agency (LSA), at the Basic Life Support (BLS) level. MAAS is a member agency of both the Saginaw Valley Medical Control Authority and the Lapeer County Medical Control Authority, which provide medical oversight and direction to MAAS and the other ambulance agencies in their respective areas.

OUR BOARD



The MAAS Board of Directors is comprised of a representative from each municipality that is contracted with MAAS. The Board meets bi-monthly to guide the operations and growth of the service. The MAAS Board members are:

Ronald Gromak, Board Chairman

*Representing Rich Township
Board Member Since 1999*

Glenn Fox, Board Vice-Chairman

*Representing Dayton Township
Board Member Since 2000*

Sherry Bodeis, Director

*Representing Fremont Township
Board Member Since 2006*

Jan Wickham, Director

*Representing the Village of Mayville
Board Member Since 2013*

OUR STAFF



The staff of MAAS is comprised of 16 Emergency Medical Technicians (EMTs), 1 Advanced Emergency Medical Technician (AEMT), 2 Paramedics and 11 Medical First Responders (MFRs). All of these are volunteers, whom receive a stipend for the time they server while on duty and responding to service requests. Each has completed a State approved training course, passed the licensing exam, obtained a CPR card, and completed an emergency driving course. As well, many have participated in specialized training courses, such as Prehospital Trauma Life Support (PHTLS), Pediatric Education for Prehospital Providers (PEPP), National Incident Management Systems (NIMS), Basic Disaster Life Support (BDLS) and more. Several have other public safety roles such as firefighters, dispatchers, and CPR instructors.

In addition to the initial requirements to become an EMS provider, each of our medical personnel are required to attend on-going continuing education to maintain their state license. In 2017, MAAS personnel completed over 200 hours of training in subjects such as cardiac emergencies, pediatrics, airway management, and more.

To ensure that day to day operations are lead successfully, the Board of Directors annually appoints officers for MAAS. These officers provide operational guidance for the staff, as well as recommendations to the Board. The MAAS Officers are:

James Welke, Executive Director

*Officer Since 1984
MAAS Member Since 1977*

**Joel Welke
Chief Financial Officer**

*Officer Since 1996
MAAS Member Since 1993*

**Chris Bennett
Equipment Manager**

*Officer Since 2016
MAAS Member Since 2011*

**Patrick Smith
Fleet Maintenance**

*Officer Since 2016
MAAS Member Since 2004*

**Patrick Duve
Cleaning**

*Officer Since 2007
MAAS Member Since 2006*

SERVICE AREA

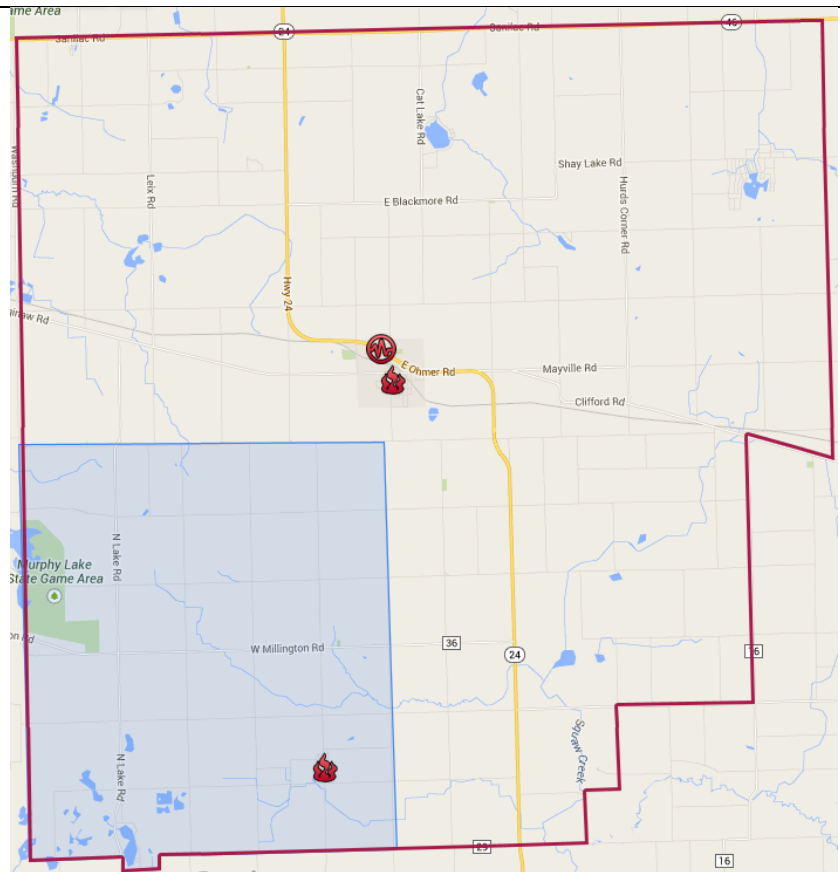


MAAS is contracted to provide services to the residents and visitors of the Village of Mayville, Fremont Township, Dayton Township, and Rich Township,

Additionally, MAAS provides services to Watertown Township.

Service Area = 134 square miles

Population = 8,530*



*Based on the 2000 Census

OUR EQUIPMENT



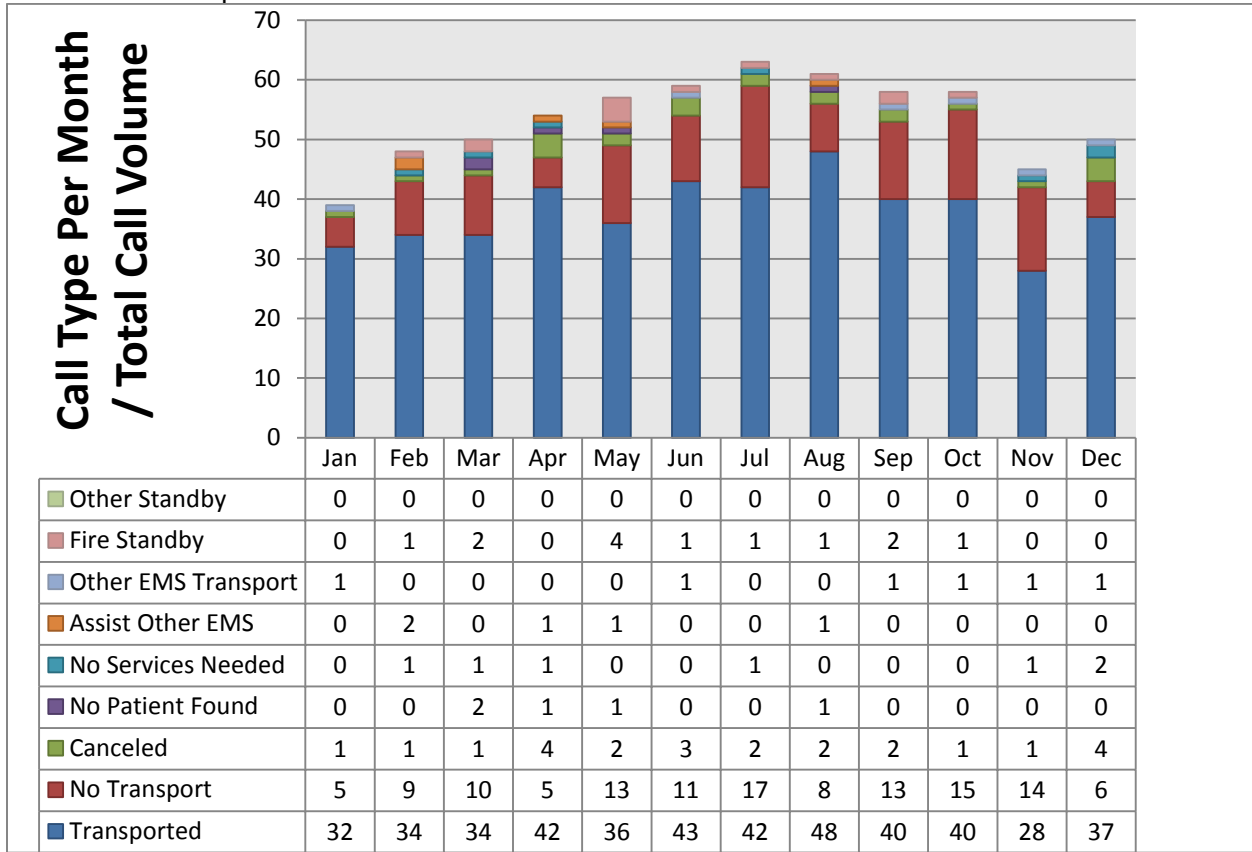
MAAS operates two ambulances from our base located at the corner of Ohmer Road (M-24) and Lynch Drive, in Mayville. At least one ambulance and crew is on duty 24 hours a day, 7 days a week – ready to respond to any emergency. Each ambulance, along with all of the equipment, is worth approximately \$250,000.

	Primary Ambulance	Backup Ambulance
Call Sign	79-94	79-95
In Service Since	June 2014	August 2008
License Level	Basic Life Support (BLS)	Basic Life Support (BLS)
Make and Model	2014 Chevy/WheeledCoach Type III Ambulance	2008 Chevy/WheeledCoach Type III Ambulance
AED Equipped	Yes	Yes
Standard Equipment	Cot, trauma kit, airway kit, multiple splints, multiple bandaging supplies, backboards, oxygen, burn sheets, and much more	Cot, trauma kit, airway kit, multiple splints, multiple bandaging supplies, backboards, oxygen, burn sheets, and much more
Specialized Equipment	Thumper®, CO Detector, Stair Chair, Landing Zone marking kit, extrication gloves and helmets	Stair Chair, Landing Zone marking kit, extrication gloves and helmets

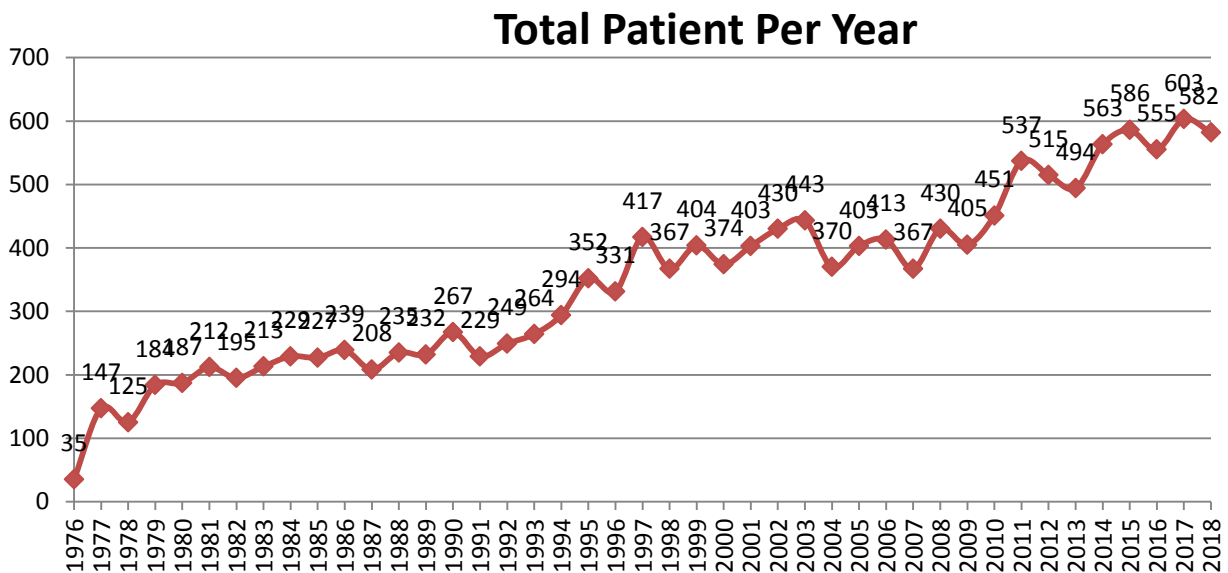
2018 OPERATIONS



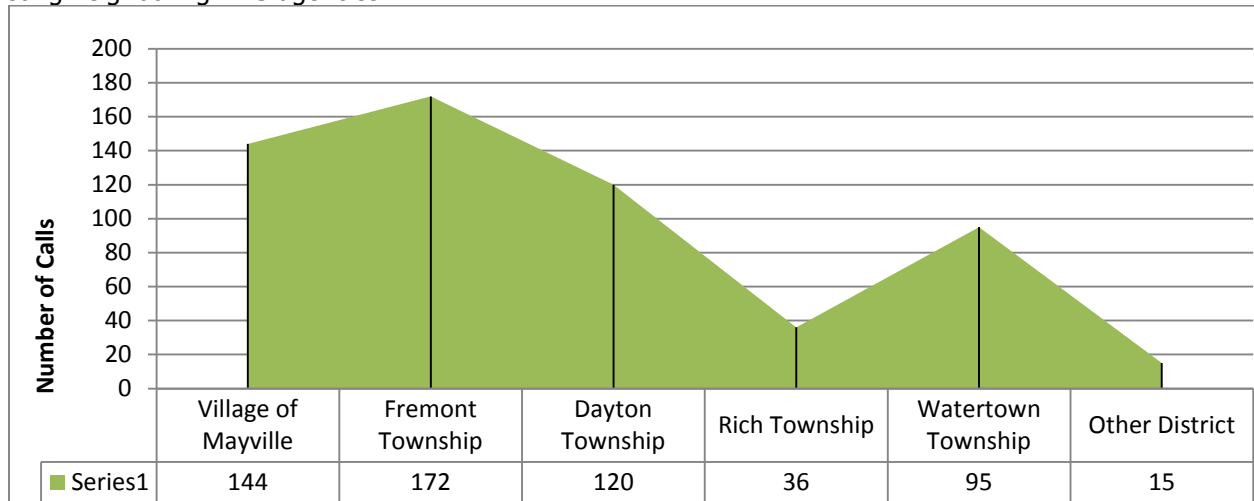
MAAS call volume continues to grow. For 2018, our staff logged **21,350.25 on call hours**. We were dispatched a total of **642** times, down 5% from 2017 (676). Of those 642 service requests, MAAS had contact with **582** patients, down 3.4% from 2017 (603). The chart below shows the breakdown, by month of the outcomes of those responses.



Although the numbers are decreased, 2017 had a higher number of scheduled non-emergency transfers; which when removed from the numbers, would put 2018 ahead of 2017. The chart below shows the number of patient encounters since MAAS began operations.



Of the 582 patient encounters in 2018, **97%** of them originated in our designated service area. Of the remaining 3% that originated outside of our service area, 6 were non-emergency transfers; the other 9 were covering for or assisting neighboring EMS agencies.



Additional Information about 2018 Operations

The following charts provide additional information and data relating to the services and patients encountered during 2018.

Patient Demographics

Age	# of Runs	% of Runs
Less Than 1	4	0.69%
1 - 4	8	1.37%
5 - 9	2	0.34%
10 - 14	11	1.89%
15 - 19	11	1.89%
20 - 24	20	3.44%
25 - 34	41	7.04%
35 - 44	40	6.87%
45 - 54	53	9.11%
55 - 64	80	13.75%
65 - 74	138	23.71%
75 - 84	113	19.42%
85+	61	10.48%
Unknown	0	0.00%
Total	583	100%

Gender	# of Patients	% of Runs
Female	319	54.81%
Male	263	45.19%
Total	582	100%

Call Type As Dispatched

Primary Symptom	# of Runs	% of Runs
Fall Victim	90	15.46%
Breathing Problem	68	11.68%
Sick Person	55	9.45%
Traffic/Transportation Accident	40	6.87%
Chest Pain	39	6.70%
Abdominal Pain	37	6.36%
Other	28	4.81%
Stroke/CVA	22	3.78%
Psychiatric Problems	21	3.61%
Altered Mental Status	20	3.44%
Seizure/Convulsions	19	3.26%
Pain	15	2.58%
Unconscious/Fainting	15	2.58%
Invalid Assist/Lifting Assist	12	2.06%
Medical Transport	12	2.06%
Weakness	12	2.06%
Cardiac Arrest	10	1.72%
Diabetic Problem	9	1.55%
Suicide Threat/Attempt	8	1.37%
Allergic Reaction	7	1.20%
Assault	7	1.20%
Back Pain (Non-Traumatic/Non-Recent Trauma)	7	1.20%
Hemorrhage/Laceration	7	1.20%
Traumatic Injury	5	0.86%
Overdose	4	0.69%
Burns	3	0.52%
Choking	2	0.34%
Epistaxis (Nosebleed)	2	0.34%
Medical Alarm	2	0.34%
Animal Bite	1	0.17%
GI Bleed	1	0.17%
Pregnancy/Childbirth	1	0.17%
Total	582	100%

Patient Destinations

Destination	# of Runs	% of Runs
MCLAREN LAPEER REGION	186	31.96%
None / Refusal	113	19.42%
COVENANT MEDICAL CENTER - COOPER	73	12.54%
CARO COMMUNITY HOSPITAL	64	11.00%
MARLETTE REGIONAL HOSPITAL	46	7.90%
ST MARY'S OF MICHIGAN MEDICAL CENTER	38	6.53%
Not Applicable	18	3.09%
GENESYS REGIONAL MEDICAL CENTER	11	1.89%
HILLS & DALES GENERAL HOSPITAL	9	1.55%
MCLAREN BAY REGION	9	1.55%
HURLEY MEDICAL CENTER	3	0.52%
COVENANT MEDICAL CENTER - HARRISON	2	0.34%
FISHER CONVALESCENT HOME	2	0.34%
Home - Patient	2	0.34%
MCLAREN FLINT	2	0.34%
BEAUMONT HOSPITAL - ROYAL OAK	1	0.17%
HENRY FORD HOSPITAL	1	0.17%
Not Available	1	0.17%
Other Destination - Unspecified	1	0.17%
Total	582	100%

EMS STRONG

STRONGER TOGETHER

As a volunteer paid on call community service agency, we are always looking for great people to join our team. Training assistance and reimbursement are provided, as well as many other benefits.

If you or someone you know is looking for a way to serve their community, please have them contact us.

For additional information regarding the Mayville Area Ambulance Service, please contact our office.

